

# Zpravodaj Společnosti pro MeziPlanetární Hmotu

Příloha čísla 1 (182) - leden 2003

## Komety v lednu 2003 (první část)

V této příloze uvádíme mapky okolí komet doporučených ke sledování, podrobnější informace budou v hlavním čísle Zpravodaje. Jasnou kometou je C/2001 RX14 (LINEAR) - mapka 4° do 11.8 mag, slabší je C/2001 HT50 (NEAT) s mapkou ve 3 částech: dvě do 13.0 mag (šířky 2.0° a 1.7°) a do 12.4 mag (2.2°). Ostatní komety jsou asi 14 mag: slábnou C/2000 SV74 (LINEAR) - mapka do 14.7, 1.5°; C/2001 K5 (LINEAR) - mapka do 14.6, 1.2°; 46P/Virtanen - mapka do 14.8 (B), 1.4°; 67P/Churyumov-Gerasimenko - mapka do 14.6, 2°; kolem maxima by měly být: C/2002 U2 (LINEAR) - mapka do 14.4, 1.6°; 30P/Reinmuth 1 - mapka do 14.6, 2.1°; 154P/Brewington - mapka do 14.6 (B), 1.8°; rozjasňovat by měly: C/2002 O7 (LINEAR) - mapka do 14.6, 1.9°; 65P/Gunn - mapka do 14.8 (B), 1.2°; 116P/Wild 4 - mapka do 14.8 (B), 1.9°; 155P/Shoemaker 3 - mapka do 14.4 mag, 2°. Efemeridy těchto komet (2000.0) jsou:

Datum	R.A. h m s	Dekl. ° '	Dist. (AU)	r (AU)	elong. °	mag	Vidit °
C/2000 SV74 (LINEAR)							
							R-12
03/01/19	15 10 01	40 41.5	4.128	4.263	91.2	14.4	78.0
03/01/23	15 10 14	40 53.7	4.107	4.283	93.6	14.4	79.4
03/01/27	15 10 08	41 07.7	4.087	4.303	96.0	14.4	80.5
03/01/31	15 09 42	41 23.2	4.068	4.322	98.4	14.4	81.3
03/02/04	15 08 54	41 40.0	4.048	4.342	100.8	14.4	81.6
03/02/08	15 07 43	41 57.7	4.030	4.363	103.2	14.4	81.5
03/02/12	15 06 10	42 16.2	4.013	4.383	105.6	14.4	81.0
03/02/16	15 04 14	42 35.0	3.997	4.403	108.0	14.4	80.1
03/02/20	15 01 55	42 53.8	3.982	4.424	110.3	14.5	79.0
03/02/24	14 59 12	43 12.3	3.970	4.445	112.6	14.5	77.6
C/2001 HT50 (NEAT)							
03/01/19	8 13 26	-4 05.1	2.366	3.286	155.3	11.5	
03/01/23	8 02 05	-3 29.7	2.339	3.265	156.5	11.5	
03/01/27	7 50 34	-2 50.3	2.322	3.245	155.8	11.4	
03/01/31	7 39 01	-2 07.4	2.314	3.225	153.3	11.4	
03/02/04	7 27 37	-1 21.9	2.317	3.205	149.4	11.4	
03/02/08	7 16 29	-0 34.3	2.330	3.186	144.6	11.4	
03/02/12	7 05 45	0 14.6	2.352	3.167	139.3	11.4	
03/02/16	6 55 32	1 03.9	2.383	3.148	133.8	11.4	
03/02/20	6 45 55	1 53.0	2.422	3.130	128.1	11.4	
03/02/24	6 36 57	2 41.5	2.467	3.112	122.4	11.4	
C/2001 K5 (LINEAR)							
							R-12
03/01/19	18 05 48	24 17.7	5.771	5.238	53.0	15.0	40.8
03/01/23	18 09 35	24 53.1	5.752	5.242	54.5	15.0	42.6
03/01/27	18 13 20	25 30.4	5.732	5.247	56.1	15.0	44.3
03/01/31	18 17 01	26 09.3	5.711	5.252	57.8	15.0	46.0
03/02/04	18 20 39	26 50.0	5.689	5.257	59.4	15.0	47.6
03/02/08	18 24 13	27 32.3	5.666	5.262	61.2	15.0	49.1
03/02/12	18 27 42	28 16.3	5.643	5.267	62.9	15.0	50.6
03/02/16	18 31 06	29 01.8	5.619	5.272	64.7	15.0	52.0
03/02/20	18 34 24	29 48.8	5.595	5.278	66.4	15.0	53.4
03/02/24	18 37 37	30 37.3	5.571	5.284	68.2	15.0	54.8
C/2001 RX14 (LINEAR)							
							R-12
03/01/19	12 11 45	45 04.4	1.342	2.058	123.7	10.3	66.9

03/01/23	12 12 08	44 49.3	1.319	2.058	126.0	10.2	64.8
03/01/27	12 11 41	44 32.4	1.298	2.060	128.4	10.2	62.7
03/01/31	12 10 22	44 13.1	1.279	2.063	130.9	10.2	60.6
03/02/04	12 08 14	43 50.6	1.262	2.067	133.3	10.2	58.3
03/02/08	12 05 20	43 24.2	1.248	2.072	135.7	10.1	
03/02/12	12 01 44	42 52.9	1.236	2.078	138.1	10.1	
03/02/16	11 57 33	42 16.2	1.227	2.085	140.3	10.1	
03/02/20	11 52 51	41 33.4	1.222	2.094	142.4	10.1	
03/02/24	11 47 48	40 44.3	1.219	2.103	144.2	10.2	

C/2002 O7 (LINEAR)

R-12

03/01/19	15 45 35	28 01.5	3.701	3.639	78.7	15.0	63.4
03/01/23	15 47 19	28 18.2	3.610	3.594	81.2	14.8	64.8
03/01/27	15 48 50	28 37.8	3.518	3.550	83.8	14.7	66.0
03/01/31	15 50 06	29 00.4	3.425	3.505	86.5	14.6	67.2
03/02/04	15 51 07	29 26.2	3.332	3.460	89.2	14.5	68.2
03/02/08	15 51 50	29 55.1	3.238	3.415	91.8	14.4	69.2
03/02/12	15 52 12	30 27.2	3.145	3.370	94.6	14.3	70.1
03/02/16	15 52 12	31 02.4	3.051	3.325	97.3	14.1	71.0
03/02/20	15 51 47	31 40.9	2.959	3.279	100.0	14.0	71.7
03/02/24	15 50 54	32 22.4	2.867	3.233	102.8	13.9	72.3

C/2002 U2 (LINEAR)

R-12

03/01/19	16 57 56	28 32.1	1.252	1.241	66.2	14.4	54.3
03/01/23	16 59 25	27 00.5	1.251	1.256	67.2	14.5	54.8
03/01/27	17 00 30	25 32.5	1.248	1.275	68.5	14.5	55.1
03/01/31	17 01 10	24 07.7	1.241	1.296	70.1	14.6	55.4
03/02/04	17 01 23	22 45.5	1.231	1.319	72.0	14.7	55.5
03/02/08	17 01 06	21 25.4	1.219	1.345	74.3	14.7	55.6
03/02/12	17 00 17	20 06.6	1.204	1.372	76.8	14.8	55.5
03/02/16	16 58 54	18 48.7	1.187	1.402	79.7	14.8	55.3
03/02/20	16 56 53	17 31.0	1.168	1.433	82.8	14.9	54.9
03/02/24	16 54 11	16 12.9	1.148	1.466	86.3	15.0	54.5

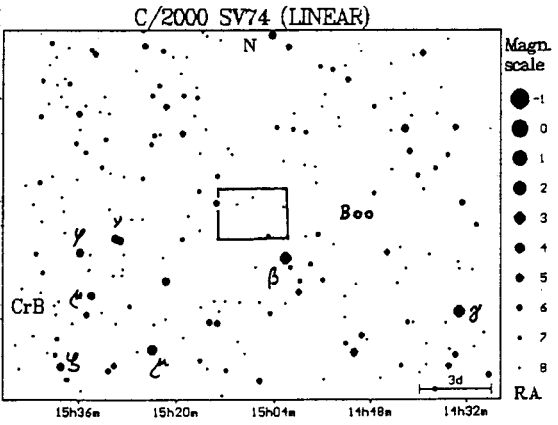
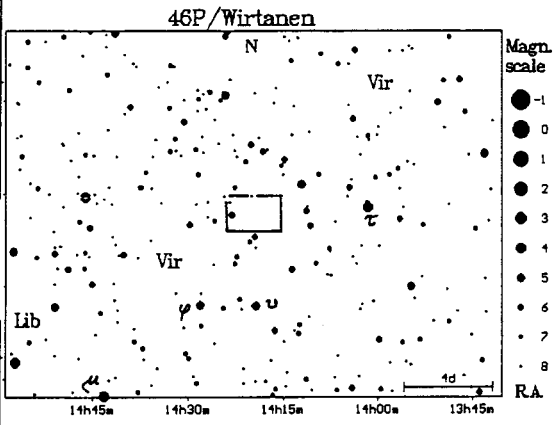
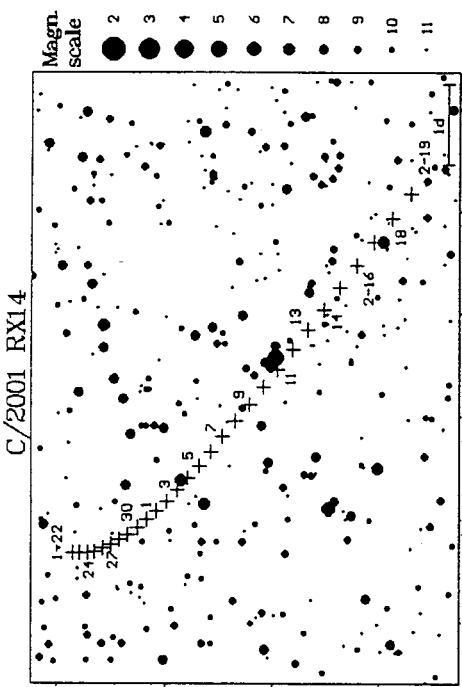
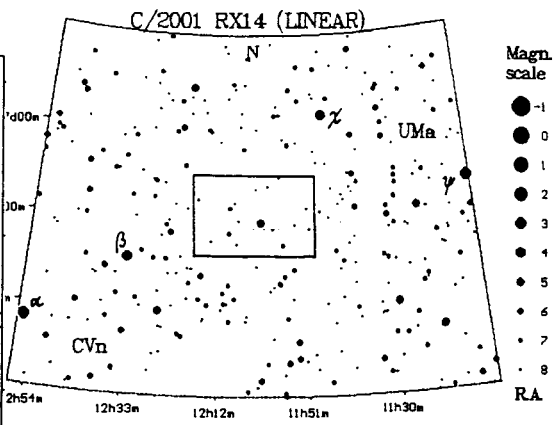
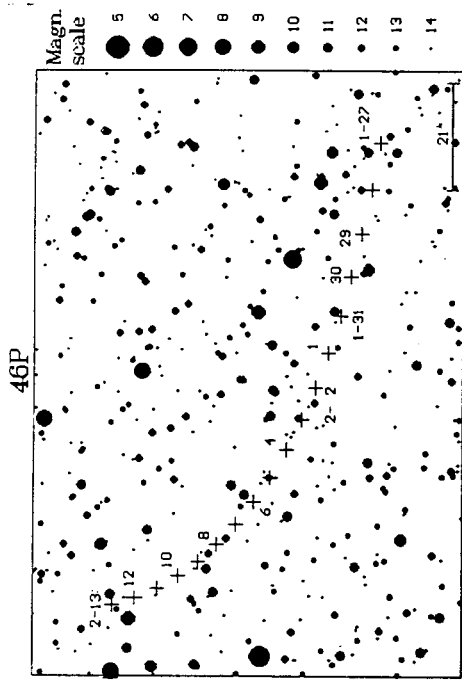
30P/Reinmuth 1

03/01/19	11 26 08	10 06.9	1.103	1.891	129.9	13.9	
03/01/23	11 28 33	10 28.2	1.079	1.896	133.5	13.8	
03/01/27	11 30 26	10 53.3	1.057	1.901	137.2	13.8	
03/01/31	11 31 47	11 22.0	1.038	1.907	141.0	13.8	
03/02/04	11 32 35	11 53.8	1.021	1.913	144.9	13.8	
03/02/08	11 32 51	12 28.2	1.008	1.921	148.8	13.8	
03/02/12	11 32 38	13 04.6	0.997	1.928	152.8	13.8	
03/02/16	11 31 57	13 42.2	0.989	1.936	156.7	13.8	
03/02/20	11 30 52	14 20.3	0.985	1.945	160.5	13.8	
03/02/24	11 29 25	14 57.9	0.985	1.955	163.9	13.8	

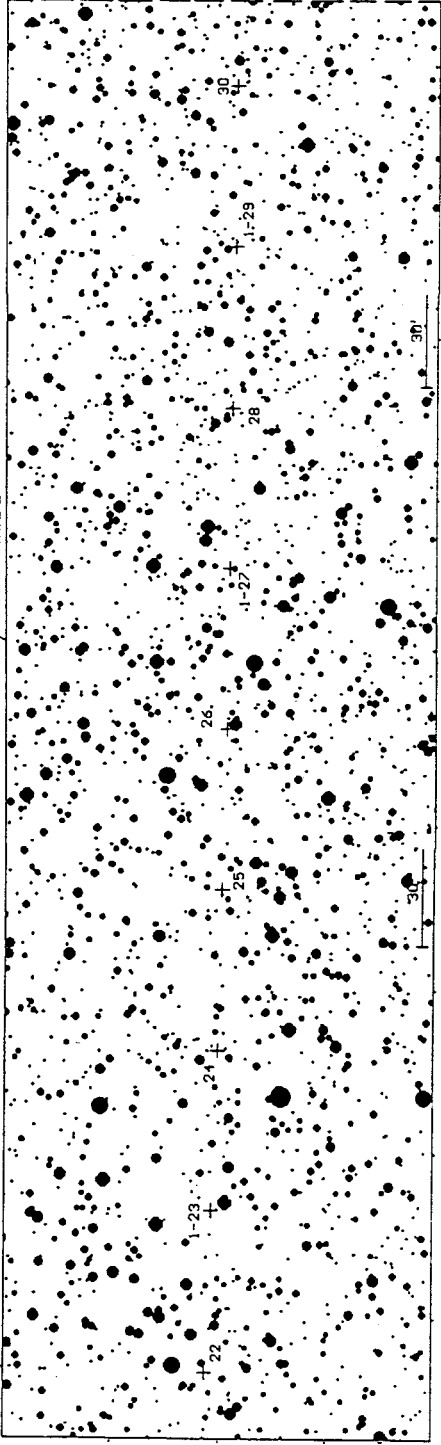
46P/Virtanen

R-12

03/01/19	14 10 41	0 44.2	1.803	2.028	88.3	14.9	40.6
03/01/23	14 13 53	0 46.3	1.786	2.061	91.5	15.0	40.5
03/01/27	14 16 36	0 51.2	1.767	2.094	94.8	15.1	40.3
03/01/31	14 18 51	0 59.0	1.749	2.128	98.3	15.1	40.1
03/02/04	14 20 35	1 09.6	1.730	2.160	101.9	15.2	39.9
03/02/08	14 21 49	1 22.9	1.712	2.193	105.5	15.3	39.6
03/02/12	14 22 30	1 38.8	1.694	2.225	109.3	15.4	39.4
03/02/16	14 22 40	1 57.1	1.677	2.258	113.3	15.4	39.1
03/02/20	14 22 16	2 17.6	1.661	2.290	117.3	15.5	38.7
03/02/24	14 21 20	2 40.1	1.647	2.322	121.4	15.6	38.3

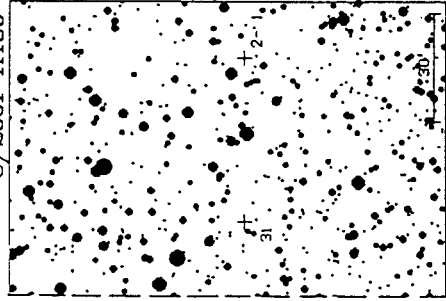


C/2001 HT50

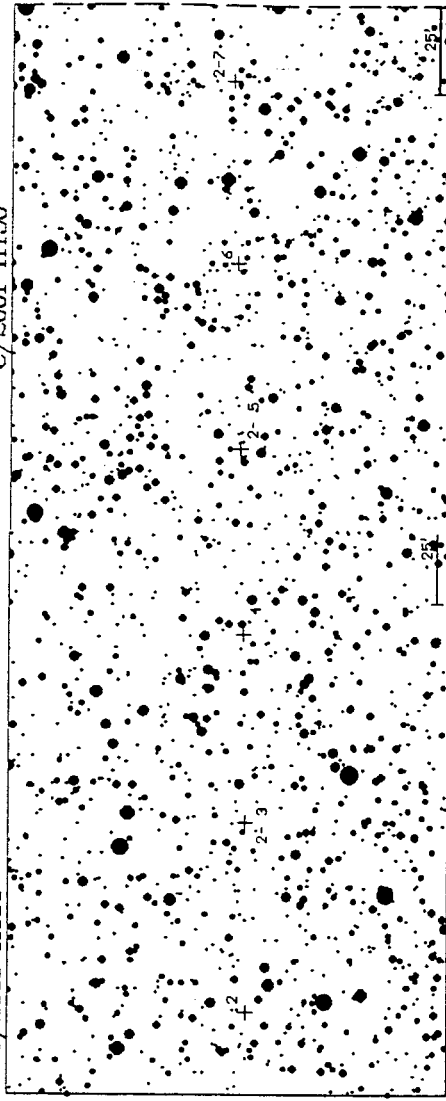


C/2001 HT50

C/2001 HT50



C/2001 HT50



C/2001 HT50

Magn.  
scale

3

4

5

6

7

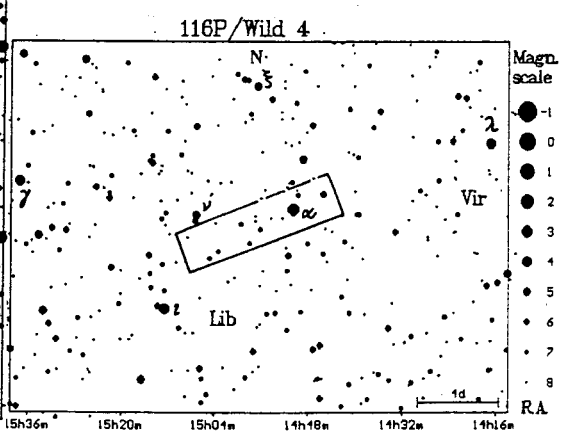
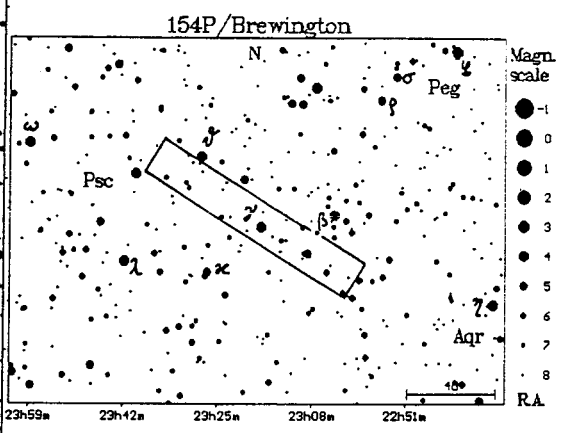
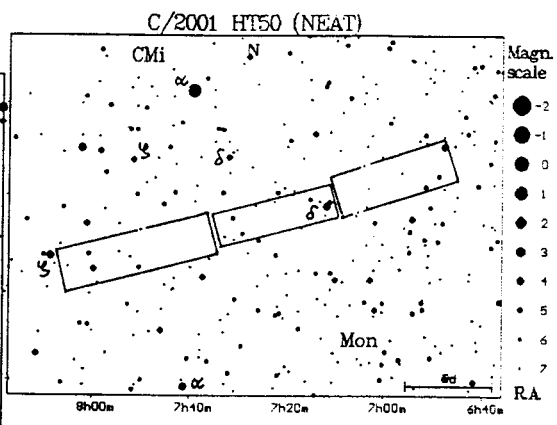
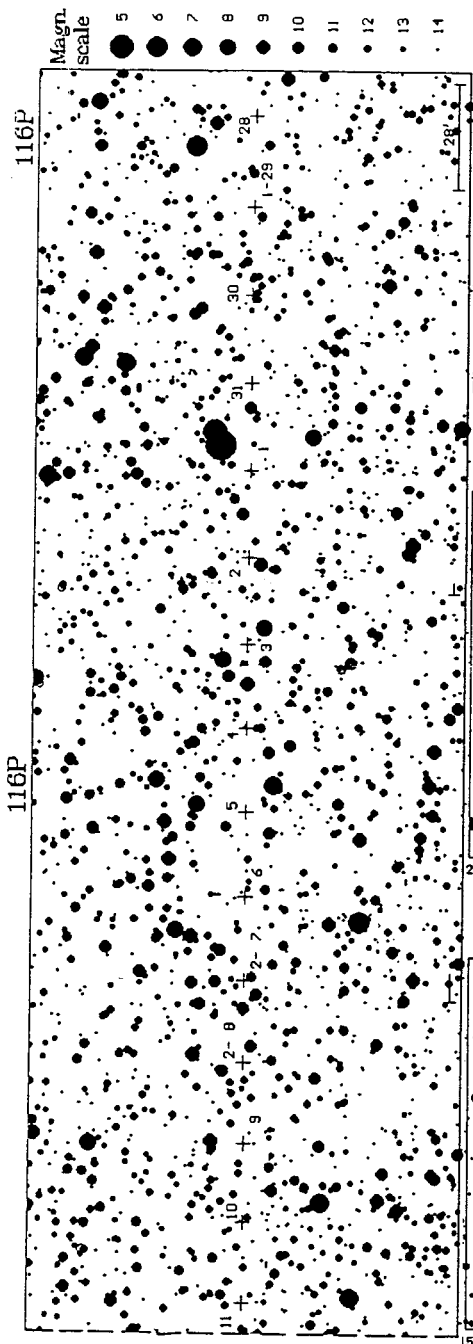
8

9

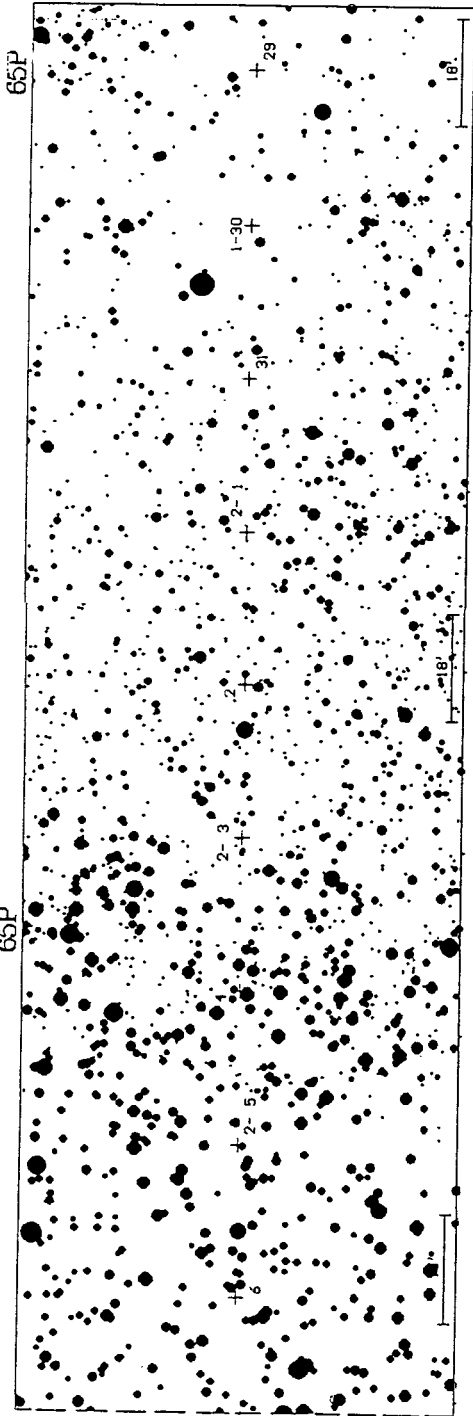
10

11

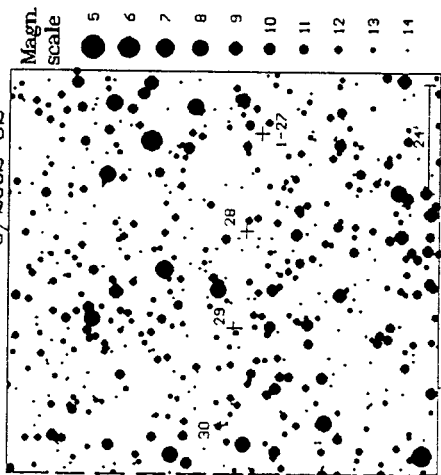
12



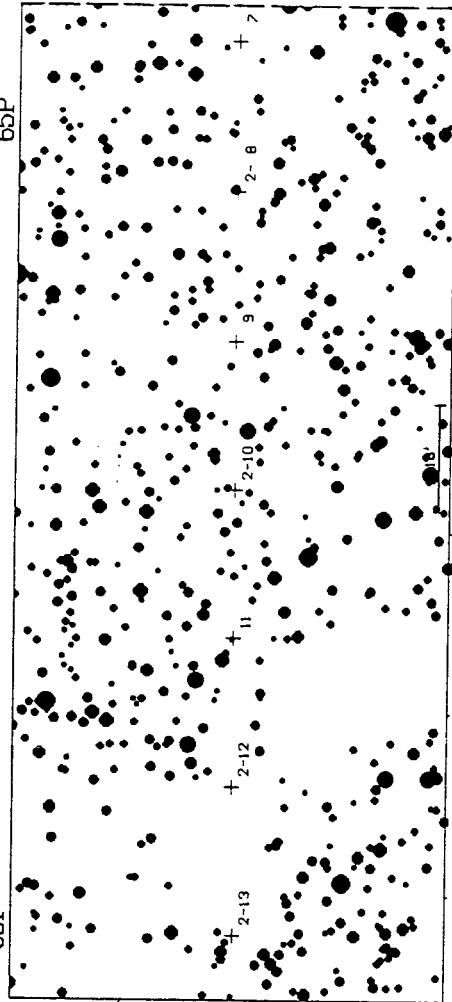
65P



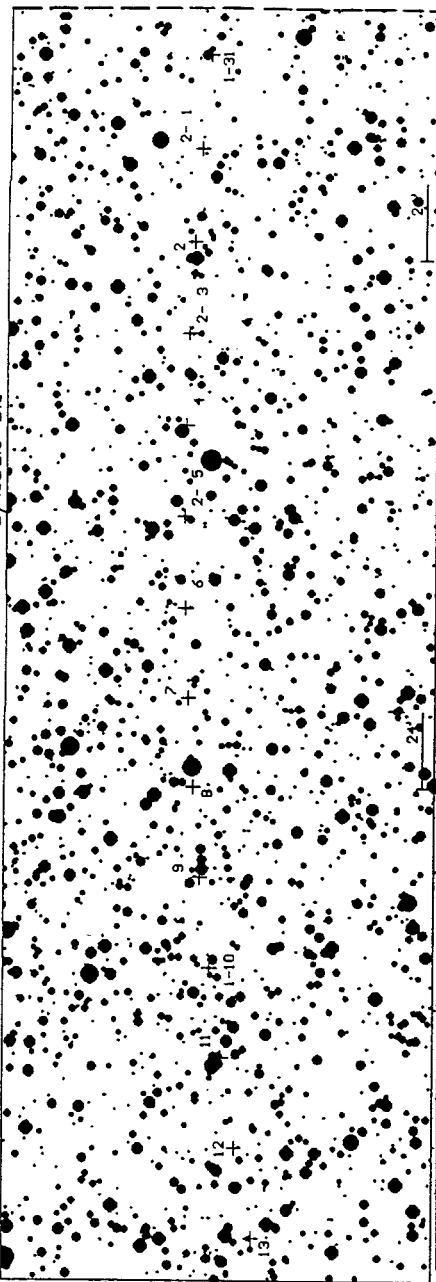
C/2002 U2



65P

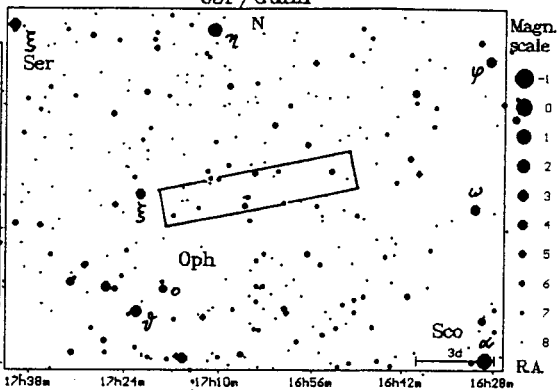


C/2002 U2

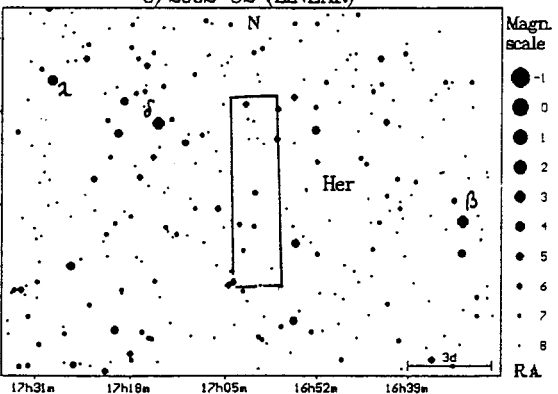


C/2002 U2

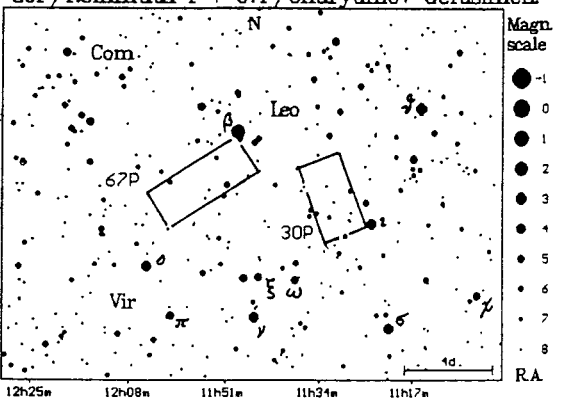
65P/Gunn

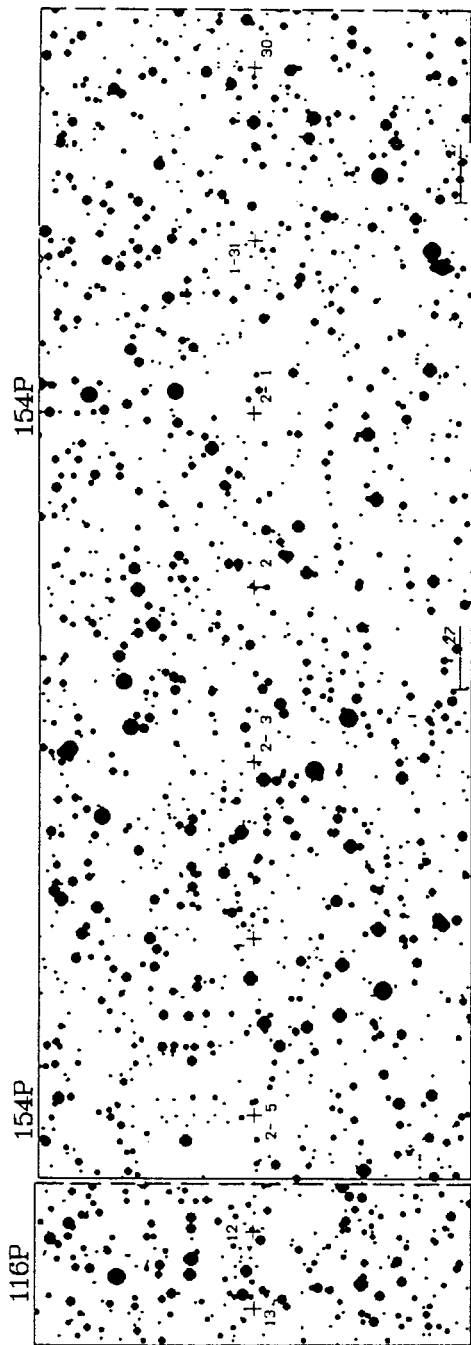
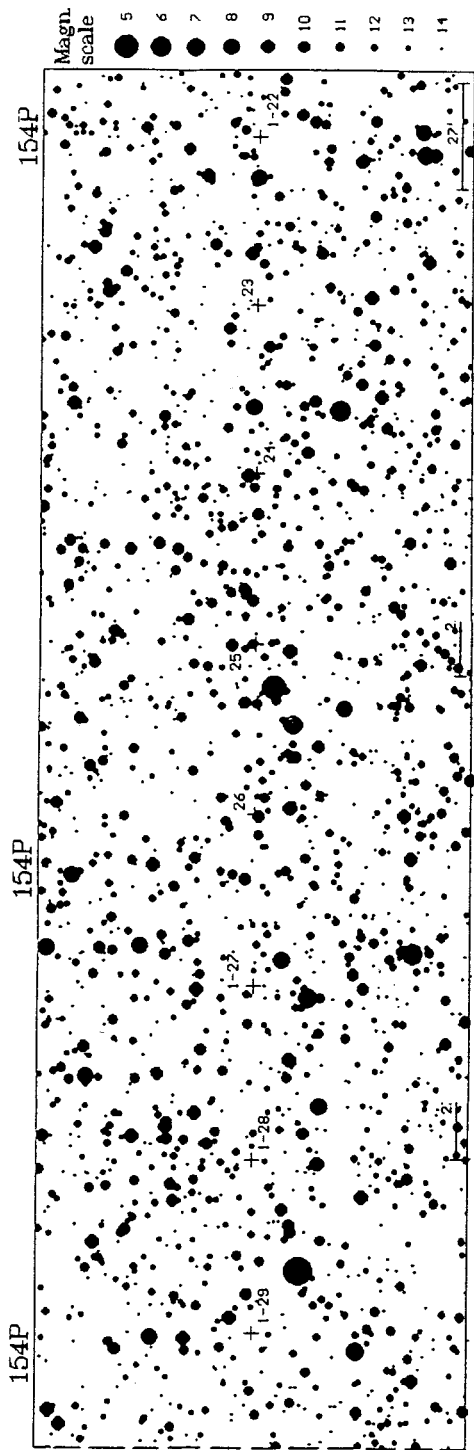


C/2002 U2 (LINEAR)



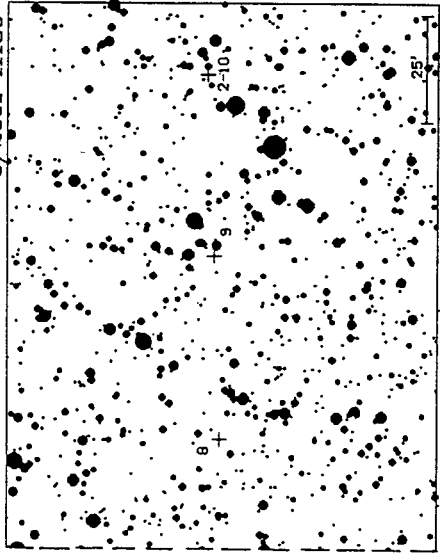
30P/Reinmuth 1 + 67P/Churyumov-Gerasimenko



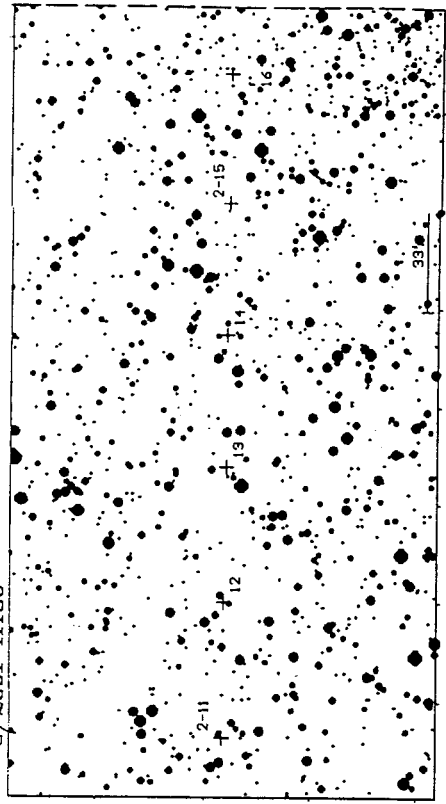




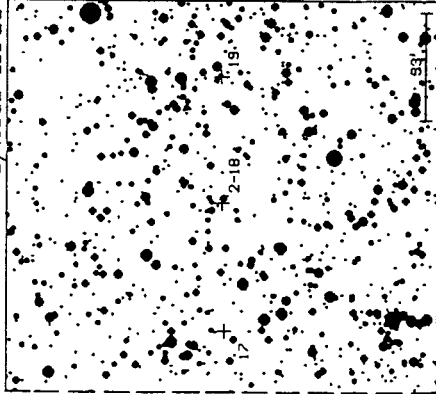
C/2001 HT50



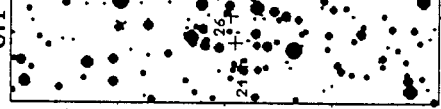
C/2001 HT50



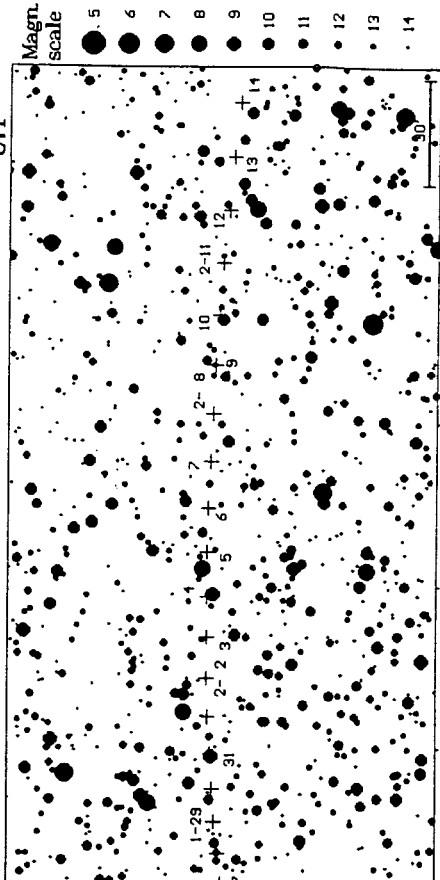
C/2001 HT50

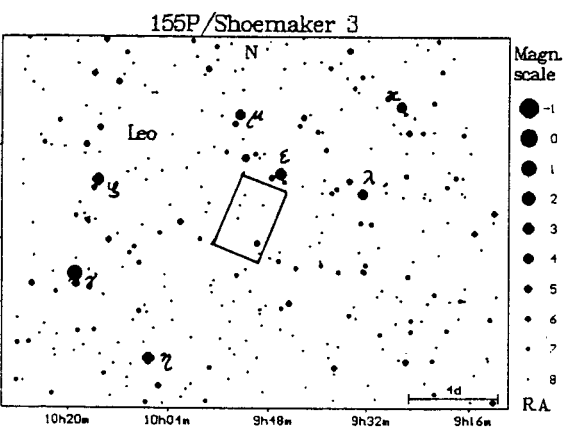
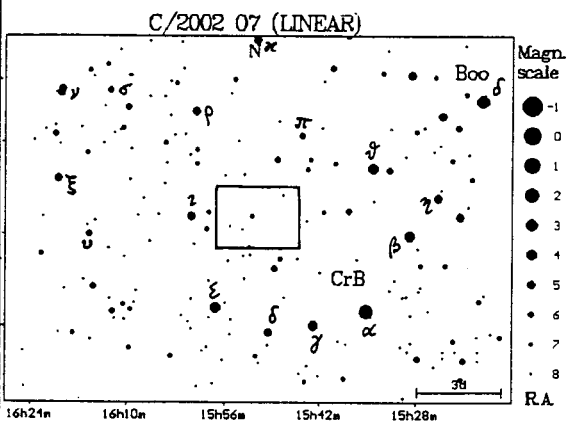
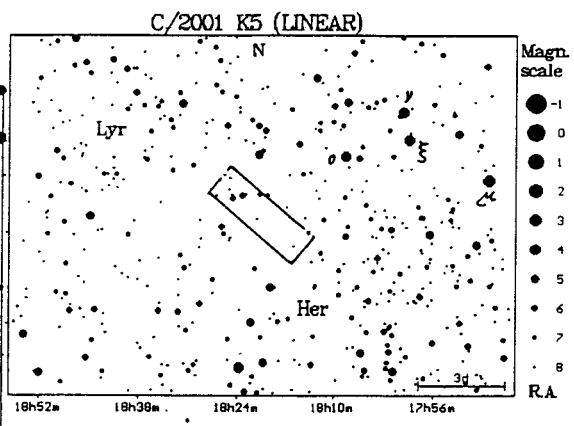
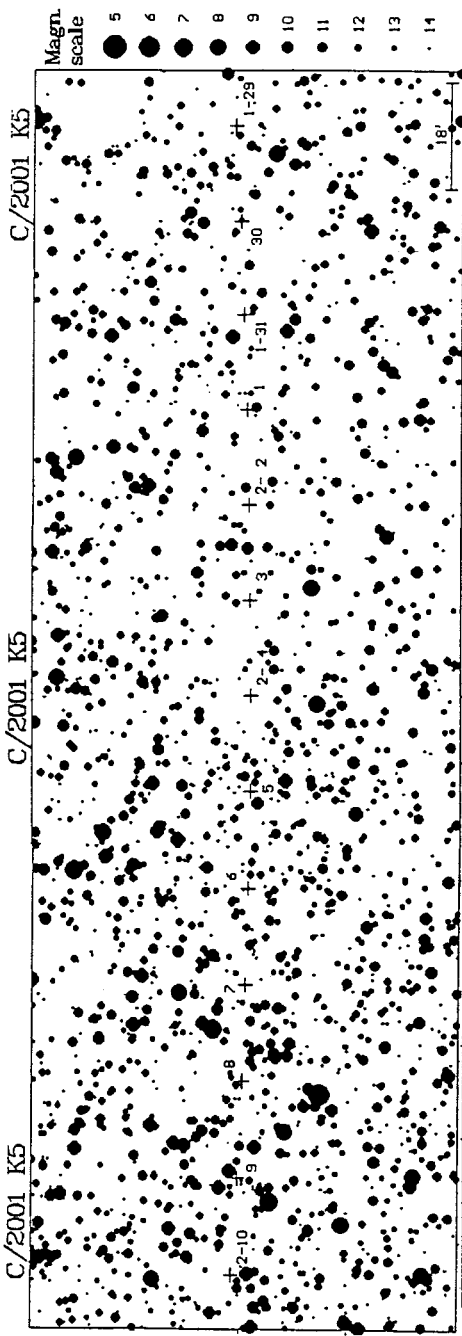


67P

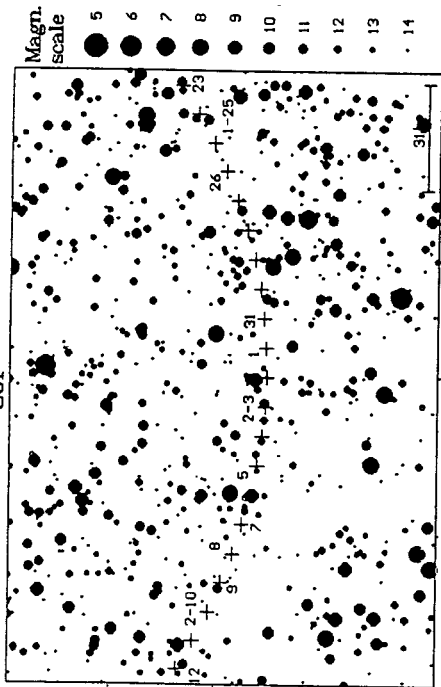


67P

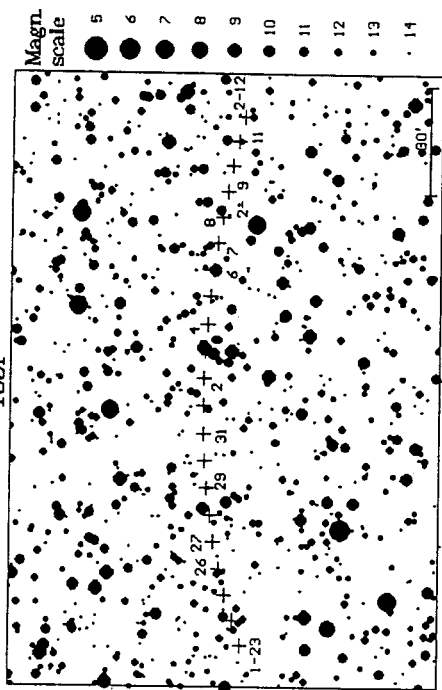




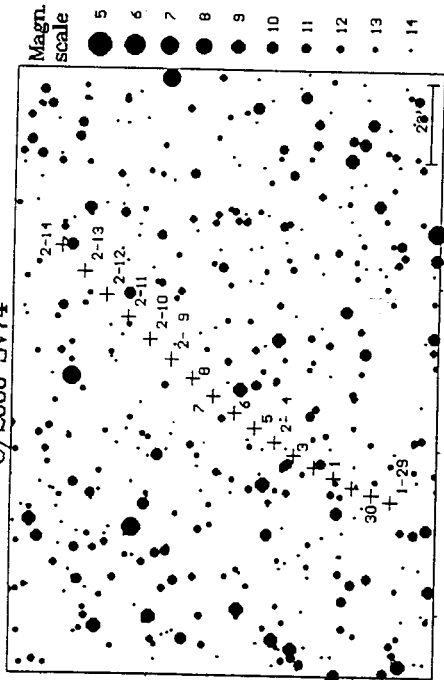
30P



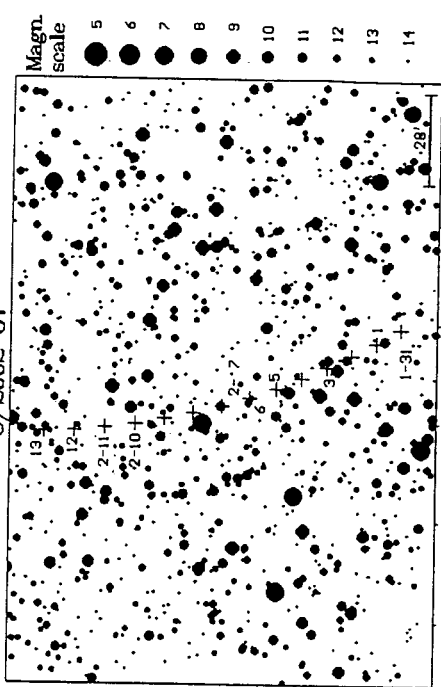
155P



C/2000 SV74



C/2002 07



65P/Gunn									R-12	
03/01/19	16	32	49	-19	31.5	3.077	2.542	49.0	13.5	15.1
03/01/23	16	40	02	-19	54.1	3.032	2.536	51.3	13.5	15.2
03/01/27	16	47	14	-20	15.5	2.986	2.530	53.6	13.4	15.2
03/01/31	16	54	24	-20	35.9	2.939	2.524	56.0	13.4	15.2
03/02/04	17	01	30	-20	55.2	2.891	2.518	58.4	13.3	15.1
03/02/08	17	08	32	-21	13.4	2.842	2.512	60.8	13.3	15.1
03/02/12	17	15	30	-21	30.7	2.792	2.507	63.2	13.2	15.0
03/02/16	17	22	23	-21	47.1	2.742	2.501	65.6	13.2	14.9
03/02/20	17	29	10	-22	02.6	2.692	2.496	68.0	13.1	14.8
03/02/24	17	35	51	-22	17.3	2.641	2.492	70.5	13.1	14.6

67P/Churyumov-Gerasimenko									R-12	
03/01/19	12	03	31	10	52.7	1.436	2.122	121.4	15.1	41.0
03/01/23	12	02	45	11	09.8	1.424	2.152	125.7	15.1	39.6
03/01/27	12	01	23	11	29.6	1.415	2.182	130.0	15.1	38.1
03/01/31	11	59	26	11	51.7	1.407	2.212	134.5	15.2	36.6
03/02/04	11	56	58	12	15.8	1.402	2.242	139.1	15.2	35.0
03/02/08	11	53	59	12	41.2	1.400	2.272	143.7	15.3	
03/02/12	11	50	33	13	07.4	1.402	2.301	148.4	15.4	
03/02/16	11	46	44	13	33.9	1.407	2.331	153.1	15.4	
03/02/20	11	42	37	13	59.9	1.416	2.361	157.7	15.5	
03/02/24	11	38	16	14	24.9	1.429	2.390	162.0	15.6	

116P/Wild 4									R-12	
03/01/19	14	30	45	-14	20.4	2.140	2.170	78.5	11.6	25.7
03/01/23	14	37	13	-14	56.4	2.096	2.170	80.9	11.5	25.1
03/01/27	14	43	31	-15	31.0	2.051	2.170	83.3	11.5	24.5
03/01/31	14	49	37	-16	04.2	2.007	2.171	85.8	11.4	23.9
03/02/04	14	55	32	-16	36.0	1.963	2.172	88.4	11.4	23.3
03/02/08	15	01	12	-17	06.3	1.919	2.173	91.0	11.3	22.7
03/02/12	15	06	38	-17	35.2	1.876	2.175	93.7	11.3	22.2
03/02/16	15	11	48	-18	02.7	1.833	2.177	96.4	11.3	21.6
03/02/20	15	16	40	-18	28.7	1.791	2.180	99.2	11.2	21.1
03/02/24	15	21	13	-18	53.4	1.749	2.183	102.1	11.2	20.6

154P/Brewington									V-12	
03/01/19	22	53	35	-0	05.8	2.140	1.628	46.6	13.9	28.4
03/01/23	23	03	06	1	21.7	2.152	1.619	45.3	13.9	28.2
03/01/27	23	12	46	2	50.0	2.165	1.612	44.2	13.8	27.8
03/01/31	23	22	36	4	19.2	2.177	1.605	43.0	13.8	27.5
03/02/04	23	32	35	5	48.9	2.190	1.600	42.0	13.8	27.0
03/02/08	23	42	42	7	19.1	2.204	1.595	40.9	13.8	26.5
03/02/12	23	53	00	8	49.3	2.218	1.592	39.9	13.8	25.9
03/02/16	0	03	26	10	19.4	2.232	1.591	39.0	13.8	25.3
03/02/20	0	14	02	11	49.1	2.247	1.590	38.1	13.8	24.6
03/02/24	0	24	48	13	18.1	2.263	1.591	37.2	13.8	24.0

155P/Shoemaker 3										
03/01/19	9	52	30	20	25.5	0.917	1.853	154.2	13.2	
03/01/23	9	52	35	20	53.8	0.913	1.863	158.1	13.2	
03/01/27	9	52	15	21	22.5	0.912	1.873	161.9	13.2	
03/01/31	9	51	34	21	50.7	0.914	1.884	165.4	13.2	
03/02/04	9	50	36	22	17.6	0.920	1.896	168.5	13.3	
03/02/08	9	49	27	22	42.6	0.929	1.909	170.5	13.4	
03/02/12	9	48	12	23	05.0	0.942	1.923	170.7	13.4	
03/02/16	9	46	58	23	24.2	0.959	1.938	168.9	13.5	
03/02/20	9	45	49	23	39.9	0.979	1.953	166.1	13.6	
03/02/24	9	44	49	23	51.8	1.002	1.969	162.6	13.7	