

Zpravodaj Společnosti pro MeziPlanetární Hmotu

Příloha čísla 4 (200) - duben 2004

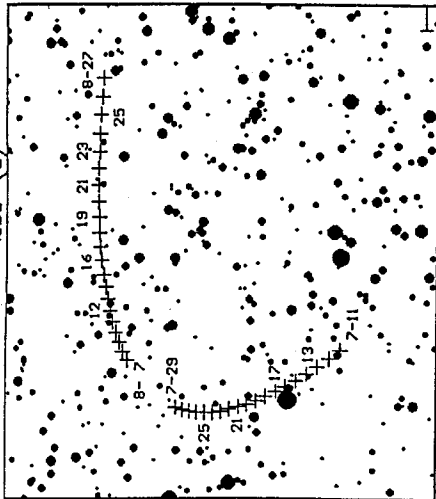
Opozice komety 29P/Schwassmann-Vachmann 1 (květen 2004-březen 2005)

Kometa 29P má po několika letech již opět trvale severní deklinace. Tato kometa je zajímavá výraznými změnami své jasnosti při téměř kruhové dráze. Uvedená jasnost je jakýmsi průměrem, v období zvýšené aktivity bývá kolem 11-12 mag, i více, při nízké aktivitě klesá její jasnost k 15-16 mag. Pro její vizuální sledování jsou vhodné dalekohledy s průměrem od 20 cm, dovolující zachycení 14 mag, ojediněle však bývá vidět i menšími dalekohledy (v blízkosti afelu byla dobře vidět binarem 25x100). V roce 2004 prochází navíc perihelem (i když je při skoro kruhové dráze - $e = 0.044$ - rozdíl nepodstatný). Celkem ji lze sledovat v 11 lunacích, mapky mají vesměs šířku 1.8° a sahají po 14.4 mag. Mapek je celkem 9, označených malými písmeny "a" až "i", orientační mapa je společná. Pozorovací období jsou: 26.května - 1.června 2004 (mapka "a"), 13.- 29.června ("b"), 11.- 29.července ("c"), 7.- 27.srpna ("c"), 4.- 25.září ("d"), 2.- 25.října ("e"), 2.- 21.listopadu ("f"), 1.- 18.prosince ("f"), 31.prosince 2004 - 15.ledna 2005 ("g"), 29.ledna - 12.února ("h") a 27.února - 13.března 2005 ("i"). Mapky jsou orientovány podél dráhy komety s výjimkou mapek "c" a "f", zachycujících oblast kolem zastávek (během opozice opíše kometa pěknou smyčku). Tyto dvě mapky mají sever nahoře a dostačují vždy pro 2 lunace.

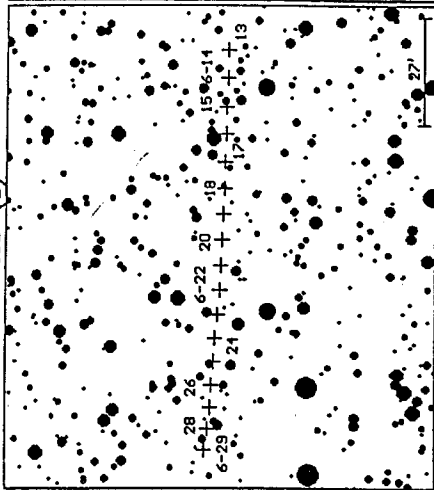
Po skoro celý rok se kometa pohybuje souhvězdím Ryb jižně od gammy Pegasa, v západní části své dráhy na okraj Pegasa na pár dnů dvakrát vstoupí. Dne 8.února projde asi 15' severně od galaxie NGC 95. Do srpna je lépe pozorovatelná večer, od ledna 2005 ráno (výšky komety při nautickém soumraku - Slunce 12° pod obzorem) obsahuje poslední sloupec. Efemerida komety po 4 dnech je v následující tabulce (polohy pro 2000.0):

Datum	R.A.			Dekl.	Dist. (AU)	r (AU)	elong. o	mag	R-12 o	
	h	m	s							
04/05/25	0	13	59	8	14.4	6.199	5.724	57.8	13.6	9.8
04/05/29	0	16	03	8	33.3	6.146	5.724	61.0	13.6	11.3
04/06/02	0	18	02	8	51.8	6.091	5.724	64.3	13.6	12.8
04/06/06	0	19	53	9	09.8	6.035	5.724	67.5	13.6	14.6
04/06/10	0	21	38	9	27.2	5.977	5.724	70.8	13.6	16.5
04/06/14	0	23	16	9	44.1	5.918	5.724	74.1	13.5	18.7
04/06/18	0	24	46	10	00.3	5.857	5.724	77.5	13.5	21.0
04/06/22	0	26	08	10	15.8	5.797	5.724	80.9	13.5	23.6
04/06/26	0	27	22	10	30.6	5.735	5.724	84.3	13.5	26.4
04/06/30	0	28	27	10	44.7	5.673	5.724	87.7	13.5	29.3
04/07/04	0	29	24	10	57.9	5.611	5.724	91.2	13.4	32.4
04/07/08	0	30	11	11	10.3	5.549	5.724	94.7	13.4	35.5
04/07/12	0	30	49	11	21.9	5.488	5.724	98.3	13.4	38.6
04/07/16	0	31	17	11	32.5	5.427	5.724	101.9	13.4	41.6
04/07/20	0	31	35	11	42.1	5.367	5.724	105.5	13.3	44.4
04/07/24	0	31	43	11	50.8	5.308	5.724	109.2	13.3	47.0
04/07/28	0	31	41	11	58.3	5.251	5.724	113.0	13.3	49.1
04/08/01	0	31	28	12	04.8	5.195	5.724	116.7	13.3	50.8
04/08/05	0	31	06	12	10.2	5.141	5.724	120.6	13.2	51.8
04/08/09	0	30	33	12	14.4	5.089	5.724	124.4	13.2	52.2
04/08/13	0	29	51	12	17.4	5.040	5.724	128.3	13.2	52.0
04/08/17	0	28	59	12	19.3	4.994	5.724	132.3	13.2	51.0
04/08/21	0	27	58	12	19.9	4.951	5.724	136.2	13.2	49.4
04/08/25	0	26	48	12	19.3	4.911	5.724	140.2	13.1	47.3
04/08/29	0	25	30	12	17.5	4.874	5.724	144.2	13.1	

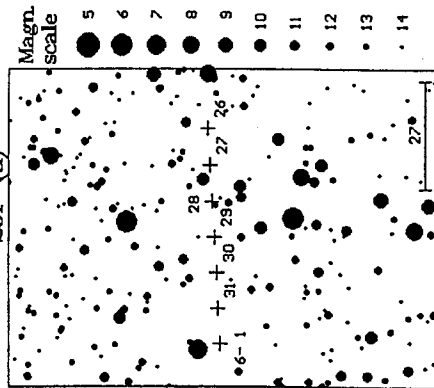
29P (c)



29P (b)



29P (a)

Magn.
scale

5

6

7

8

9

10

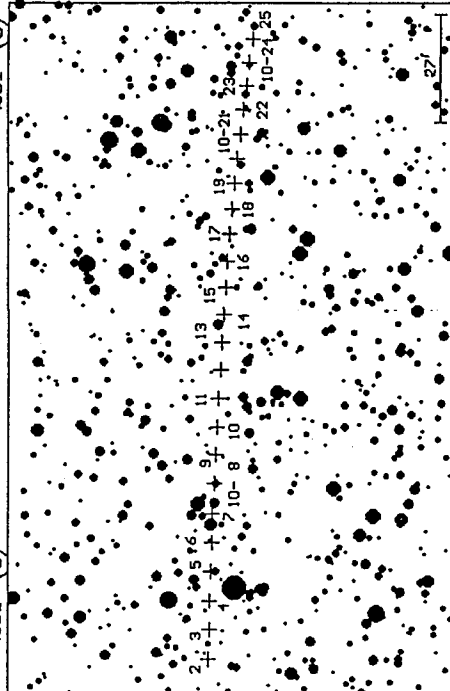
11

12

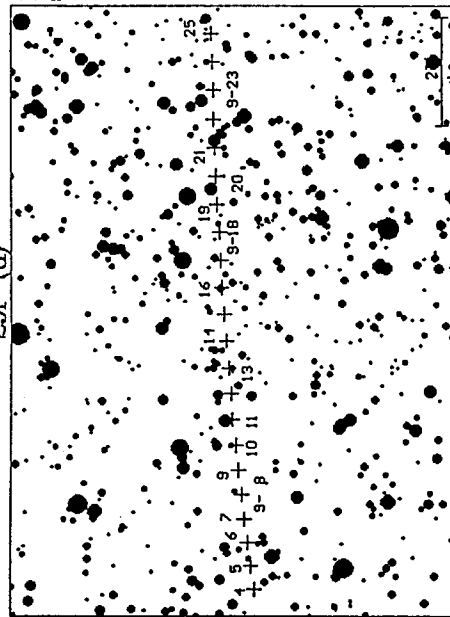
13

14

29P (e)



29P (d)

Magn.
scale

5

6

7

8

9

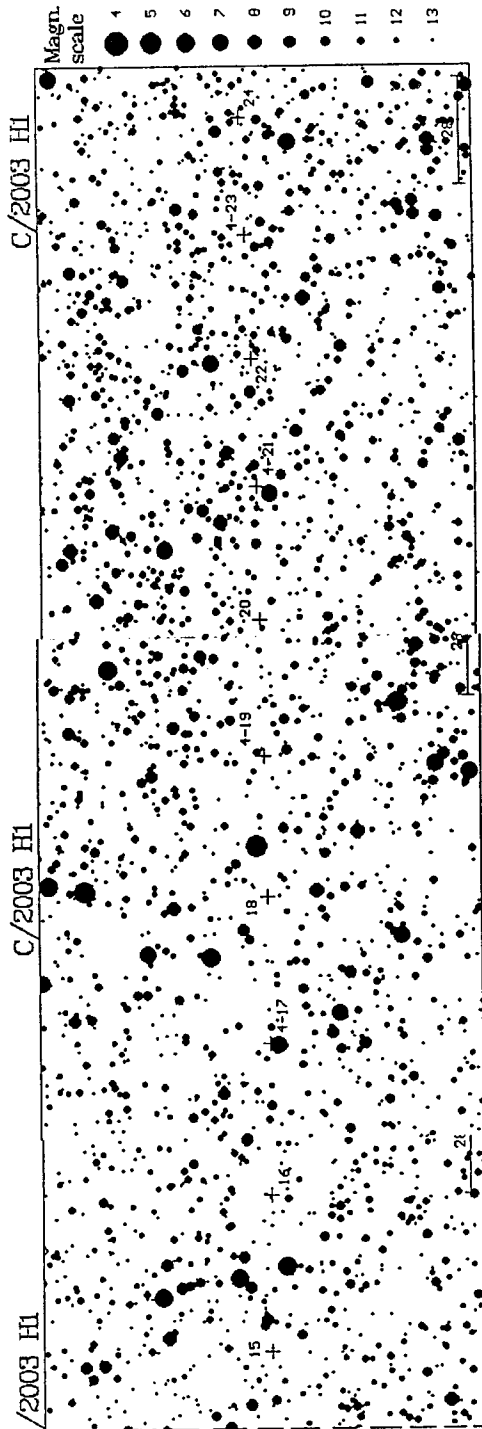
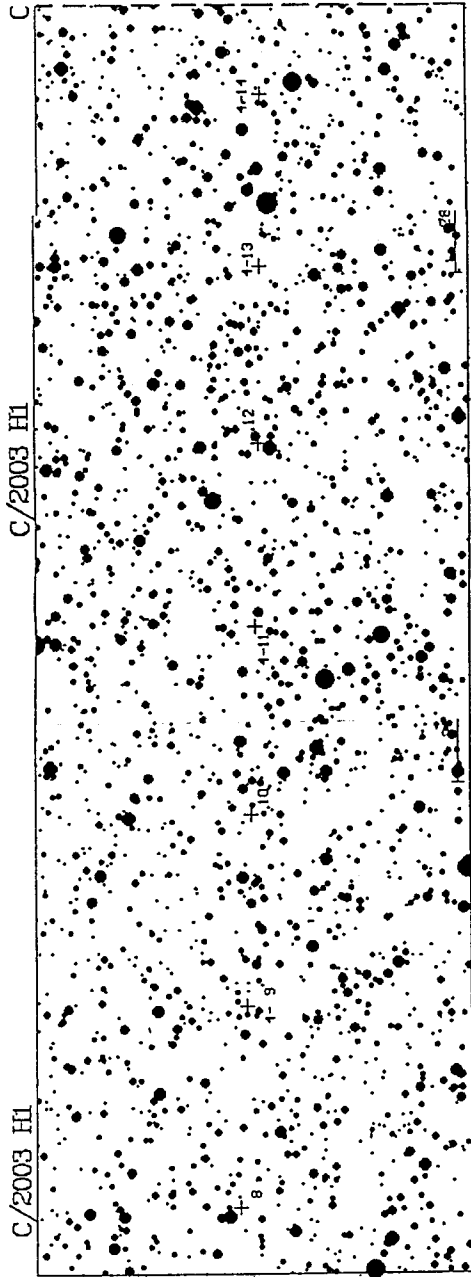
10

11

12

13

14

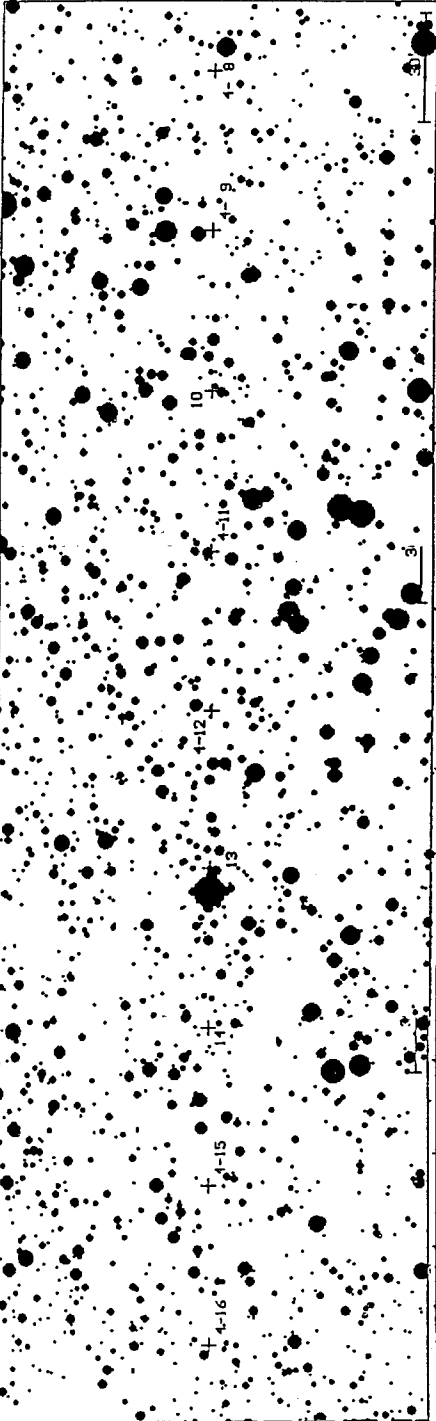




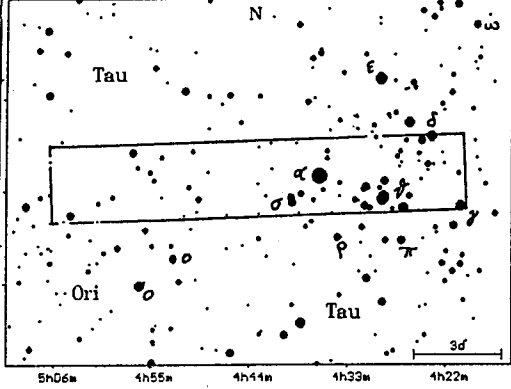
43P

43P

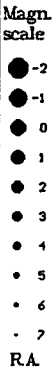
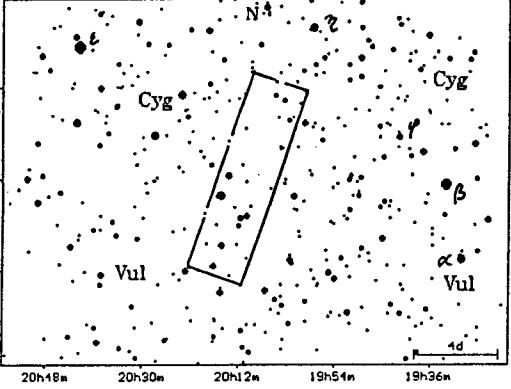
43P



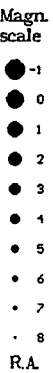
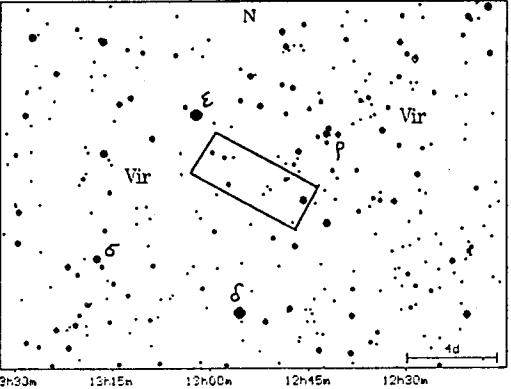
43P/Wolf-Harrington



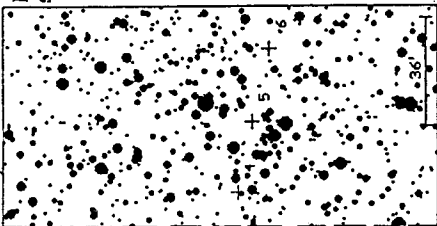
C/2003 K4 (LINEAR)



123P/West-Hartley



C/2003 K4



Magn. scale

3

4

5

6

7

8

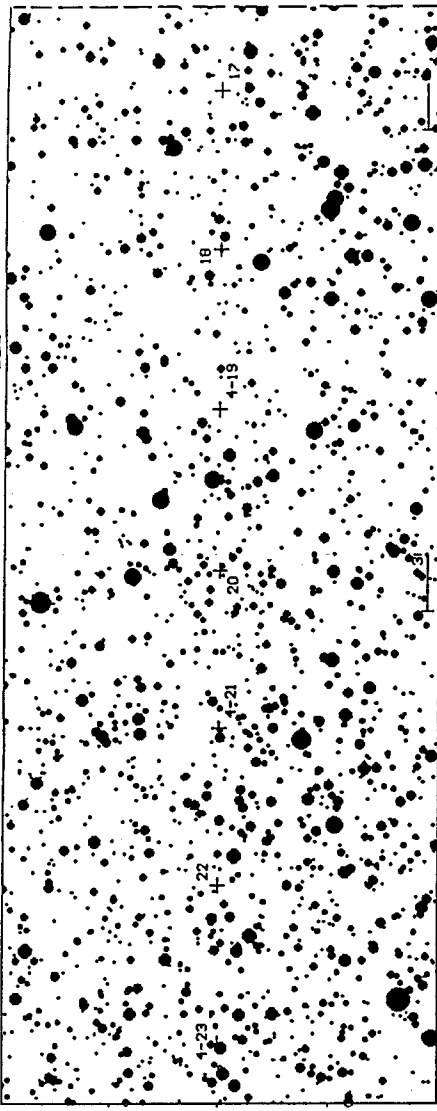
9

10

11

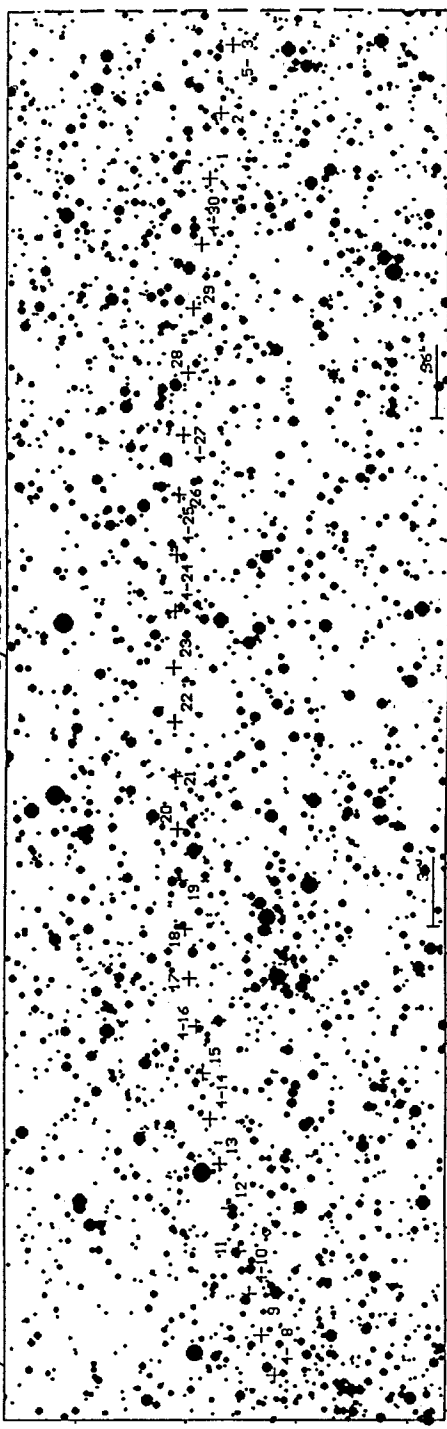
12

43P

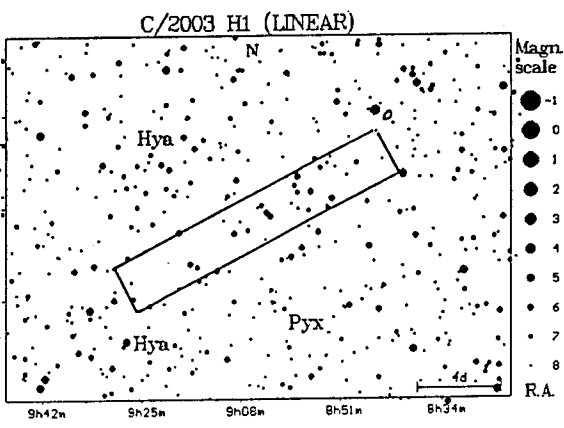
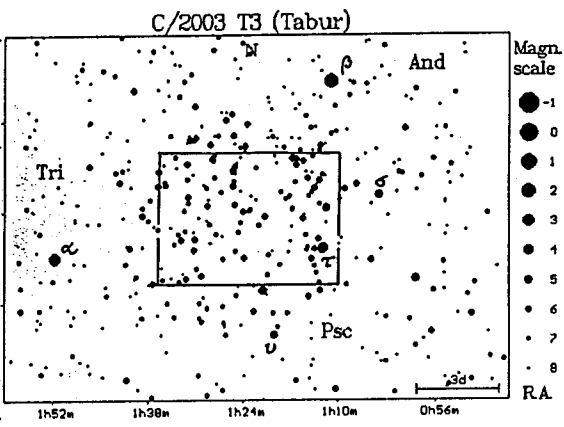
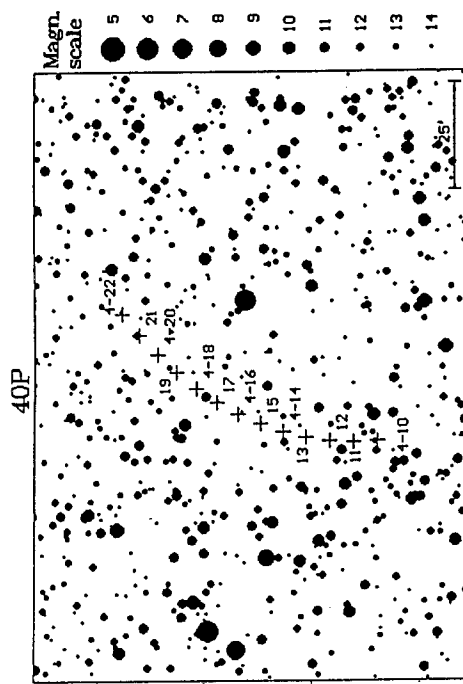
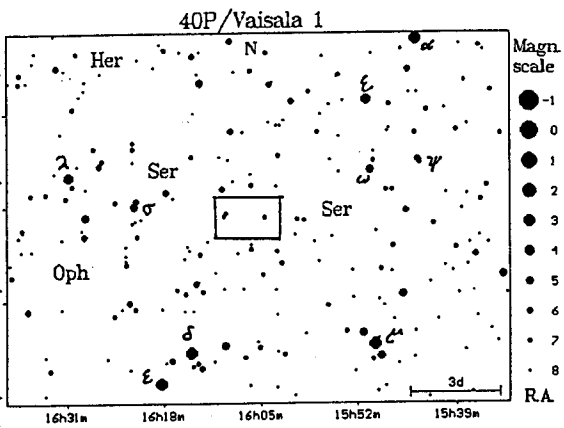
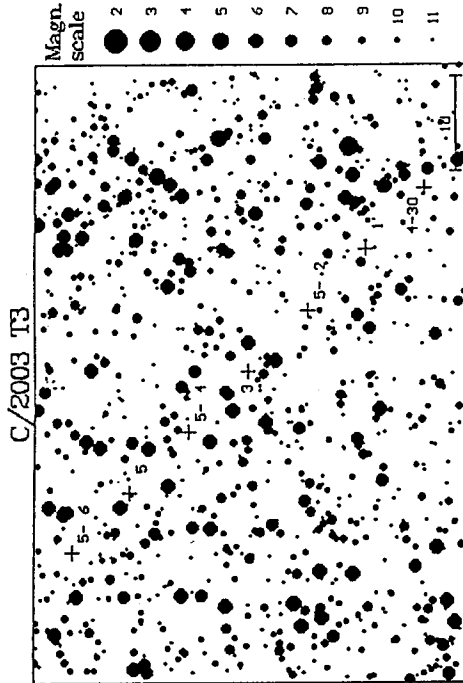


43P

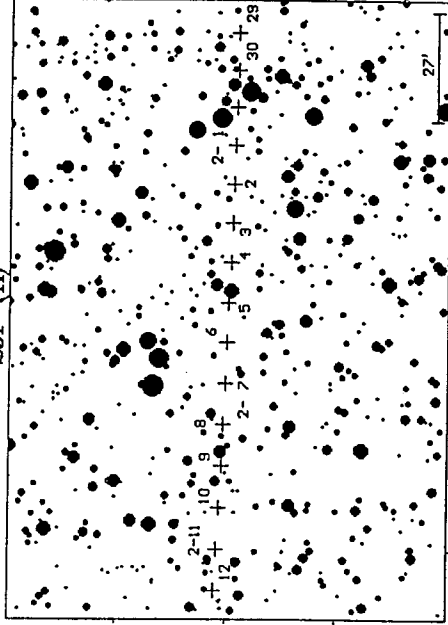
C/2003 K4



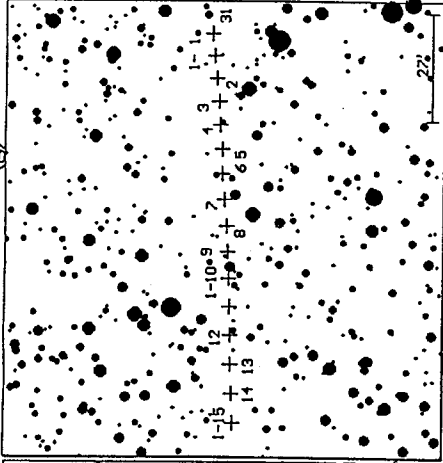
C/2003 K4



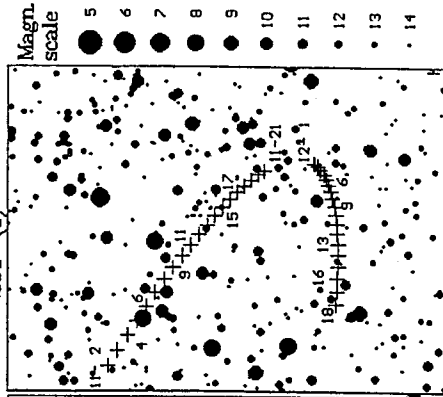
29P (h)



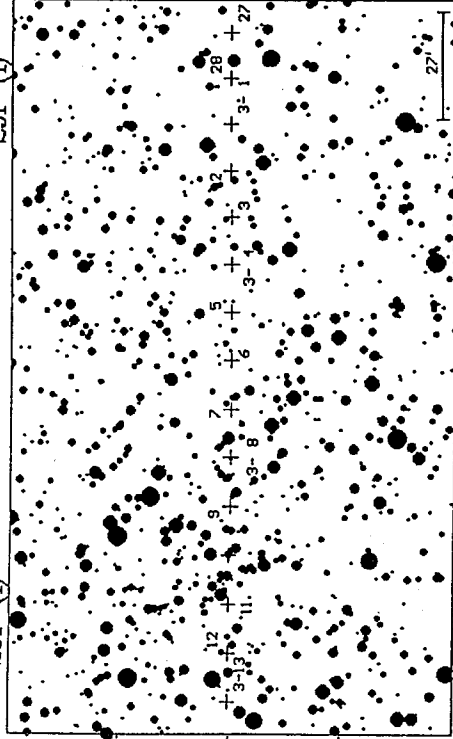
29P (g)



29P (f)

Magn.
scale

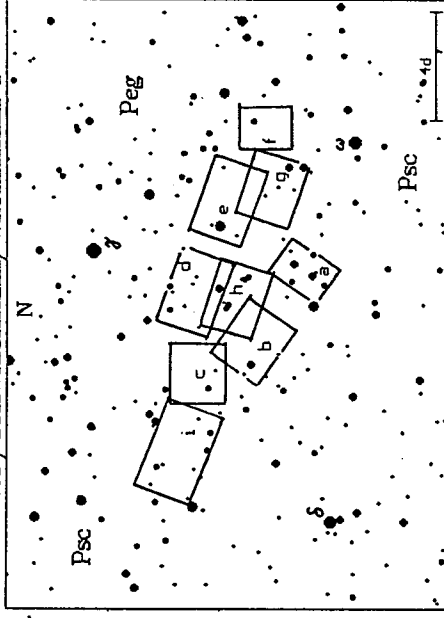
29P (i)



29P (j)

Magn.
scale

29P/Schwassmann/Wachmann 1

Magn.
scale

Datum	R.A.			Dekl.		Dist. (AU)	r (AU)	elong. o	mag	V-12 o
	h	m	s	o	'					
04/09/02	0	24	04	12	14.6	4.841	5.724	148.3	13.1	
04/09/06	0	22	32	12	10.5	4.813	5.724	152.3	13.1	
04/09/10	0	20	54	12	05.4	4.788	5.724	156.3	13.1	
04/09/14	0	19	11	11	59.2	4.768	5.724	160.1	13.1	
04/09/18	0	17	25	11	52.0	4.753	5.725	163.8	13.1	
04/09/22	0	15	36	11	43.9	4.742	5.725	167.1	13.1	
04/09/26	0	13	46	11	35.1	4.736	5.725	169.7	13.1	
04/09/30	0	11	55	11	25.6	4.734	5.725	170.7	13.1	
04/10/04	0	10	06	11	15.6	4.738	5.725	169.8	13.1	
04/10/08	0	08	19	11	05.1	4.746	5.725	167.3	13.1	
04/10/12	0	06	35	10	54.4	4.759	5.725	164.0	13.1	
04/10/16	0	04	56	10	43.5	4.777	5.725	160.3	13.1	
04/10/20	0	03	22	10	32.6	4.800	5.726	156.3	13.1	
04/10/24	0	01	55	10	21.8	4.827	5.726	152.2	13.1	
04/10/28	0	00	36	10	11.3	4.858	5.726	148.1	13.1	
04/11/01	23	59	24	10	01.2	4.894	5.726	144.0	13.1	
04/11/05	23	58	22	9	51.6	4.933	5.726	139.8	13.1	
04/11/09	23	57	29	9	42.6	4.976	5.727	135.7	13.2	
04/11/13	23	56	46	9	34.3	5.022	5.727	131.6	13.2	36.2
04/11/17	23	56	14	9	26.8	5.072	5.727	127.5	13.2	37.7
04/11/21	23	55	52	9	20.2	5.124	5.727	123.4	13.2	39.2
04/11/25	23	55	41	9	14.6	5.179	5.727	119.3	13.3	40.7
04/11/29	23	55	41	9	10.0	5.236	5.728	115.3	13.3	42.1
04/12/03	23	55	52	9	06.4	5.295	5.728	111.3	13.3	43.5
04/12/07	23	56	13	9	03.9	5.356	5.728	107.4	13.3	44.8
04/12/11	23	56	45	9	02.5	5.418	5.728	103.5	13.4	46.0
04/12/15	23	57	28	9	02.2	5.481	5.728	99.6	13.4	47.1
04/12/19	23	58	21	9	03.1	5.545	5.729	95.8	13.4	48.0
04/12/23	23	59	23	9	05.1	5.609	5.729	92.0	13.4	48.7
04/12/27	0	00	35	9	08.2	5.673	5.729	88.3	13.5	49.1
04/12/31	0	01	57	9	12.4	5.738	5.730	84.6	13.5	49.2
05/01/04	0	03	27	9	17.6	5.802	5.730	80.9	13.5	49.0
05/01/08	0	05	05	9	23.9	5.865	5.730	77.3	13.5	48.4
05/01/12	0	06	52	9	31.3	5.928	5.730	73.7	13.6	47.6
05/01/16	0	08	46	9	39.6	5.989	5.731	70.2	13.6	46.4
05/01/20	0	10	48	9	48.9	6.049	5.731	66.7	13.6	44.8
05/01/24	0	12	56	9	59.1	6.107	5.731	63.2	13.6	43.1
05/01/28	0	15	11	10	10.2	6.164	5.732	59.8	13.6	41.0
05/02/01	0	17	32	10	22.1	6.219	5.732	56.4	13.7	38.8
05/02/05	0	19	58	10	34.8	6.272	5.732	53.0	13.7	36.4
05/02/09	0	22	30	10	48.3	6.322	5.733	49.6	13.7	33.9
05/02/13	0	25	07	11	02.5	6.370	5.733	46.3	13.7	31.2
05/02/17	0	27	48	11	17.3	6.416	5.733	43.1	13.7	28.5
05/02/21	0	30	34	11	32.8	6.458	5.734	39.8	13.7	25.7
05/02/25	0	33	23	11	48.9	6.498	5.734	36.6	13.8	22.9
05/03/01	0	36	16	12	05.5	6.535	5.734	33.4	13.8	20.0
05/03/05	0	39	11	12	22.5	6.569	5.735	30.3	13.8	17.1
05/03/09	0	42	10	12	40.1	6.600	5.735	27.2	13.8	14.2
05/03/13	0	45	11	12	58.1	6.628	5.735	24.1	13.8	11.3
05/03/17	0	48	15	13	16.4	6.653	5.736	21.2	13.8	8.5